

HIKE IT!

Ramona Falls

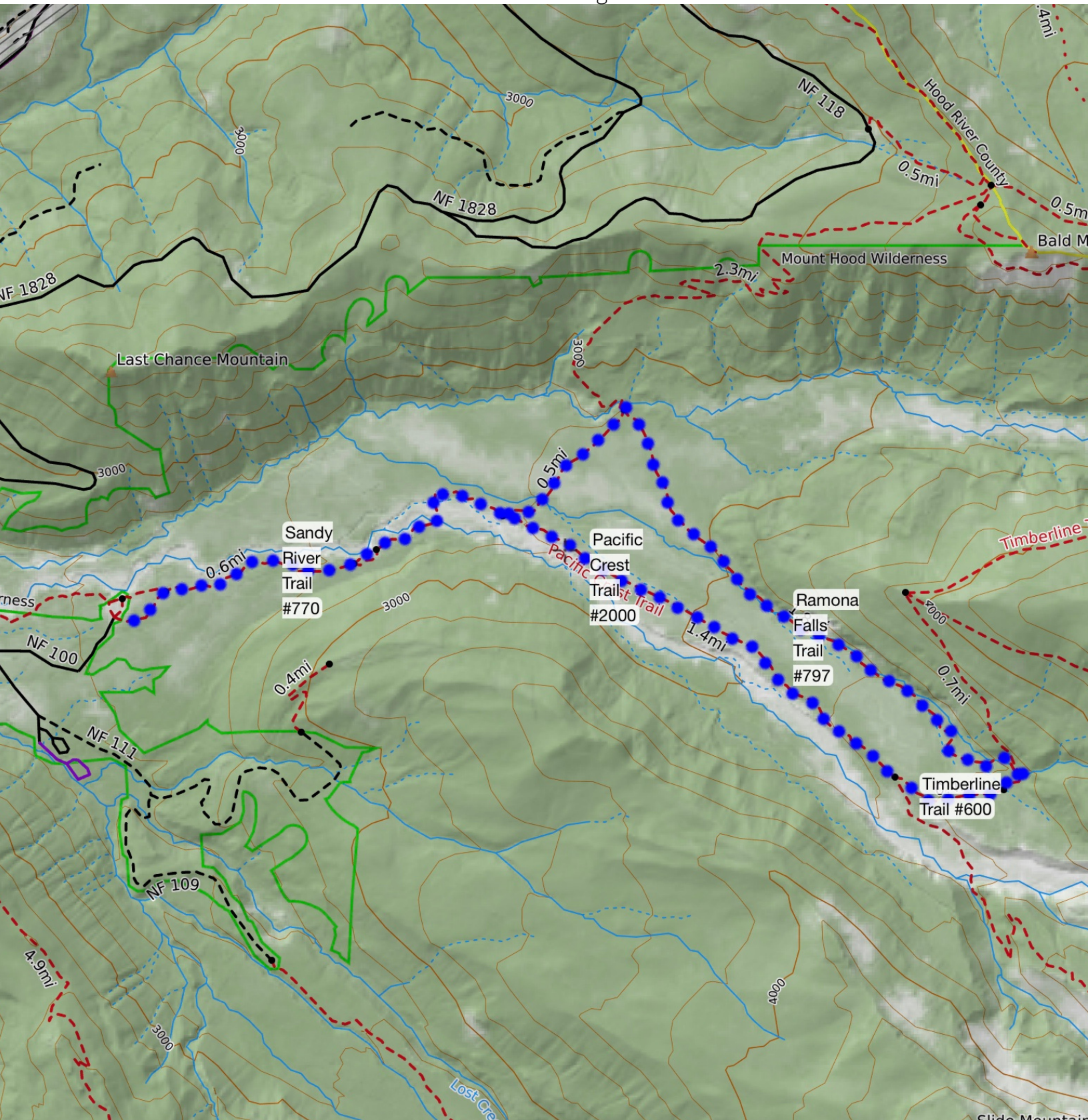
Length: 7.65 miles

Total Elevation Gain: 1270'

Average Hike Time: 3 hrs 30 mins+

Max Elevation: 3613'

Min Elevation: 2473'



Getting There

To get to the trail head - take highway 26 and then turn off onto Lolo Pass road. After about 4 1/2 miles bear right onto the Muddy Fork Road. After 3/4 of a mile take the road to the right across the bridge and then follow the road to its end. It's fairly well sign posted to Ramona Falls. There are turn offs to the right for the Riley Horse Camp and Lost Creek. The road is a little rough but passable with a normal car.

The Hike

This is not a difficult hike. However you do have to cross the Sandy River. There are no fixed bridges across the Sandy and most of the time you have to rely on where a convenient log has become lodged. This can make the crossing a little challenging. Be aware that there are times when the river can be dangerous, during times of high melt or immediately after heavy rain. Make sure you are comfortable with the river crossing before attempting it. The trail takes you into the wilderness area and you have to fill out the permit at the permit box.



The Trail Head

There is a large parking lot at the trail head - with enough parking spaces for 50 cars or so. This is a very popular trail head and can quickly get full during the weekends and popular times. There are port-a-potties and trash cans available. This is a fee area so a Northwest Forest Pass, or day use fee are required.



Where to Camp

This hike is most often a day hike. It's also an awesome overnight backpack trip, ideal for beginners. There are good camping spots on the top of the sand bar just after crossing the Sandy River, a few nice spots just after the split of the Timberline Trail from the Pacific Crest Trail and also on the Ramona Falls Trail, after the falls, on the north side of the creek. To get to these you have to cross the small creek, again usually on logs - but this is a very small creek. Note that there is no camping in the immediate area of Ramona Falls.

What's Noticeable

The highlight of this Hike is Ramona Falls itself. This is one of the iconic falls in Oregon and never disappoints. Water cascades down 120 feet in a shimmering horsetail falls. There is the most perfect viewing area and the temperature is generally several degrees cooler making it the perfect retreat for a hot summer's day.



HikeIt Maps are (c) HikeIt 2021. Do not rely solely on this information for navigation. Make sure that you are prepared with the right equipment and know the weather conditions for your hike. Always practice LNT.

For more information: www.hikeit.com