

HIKE IT!

Paradise Park

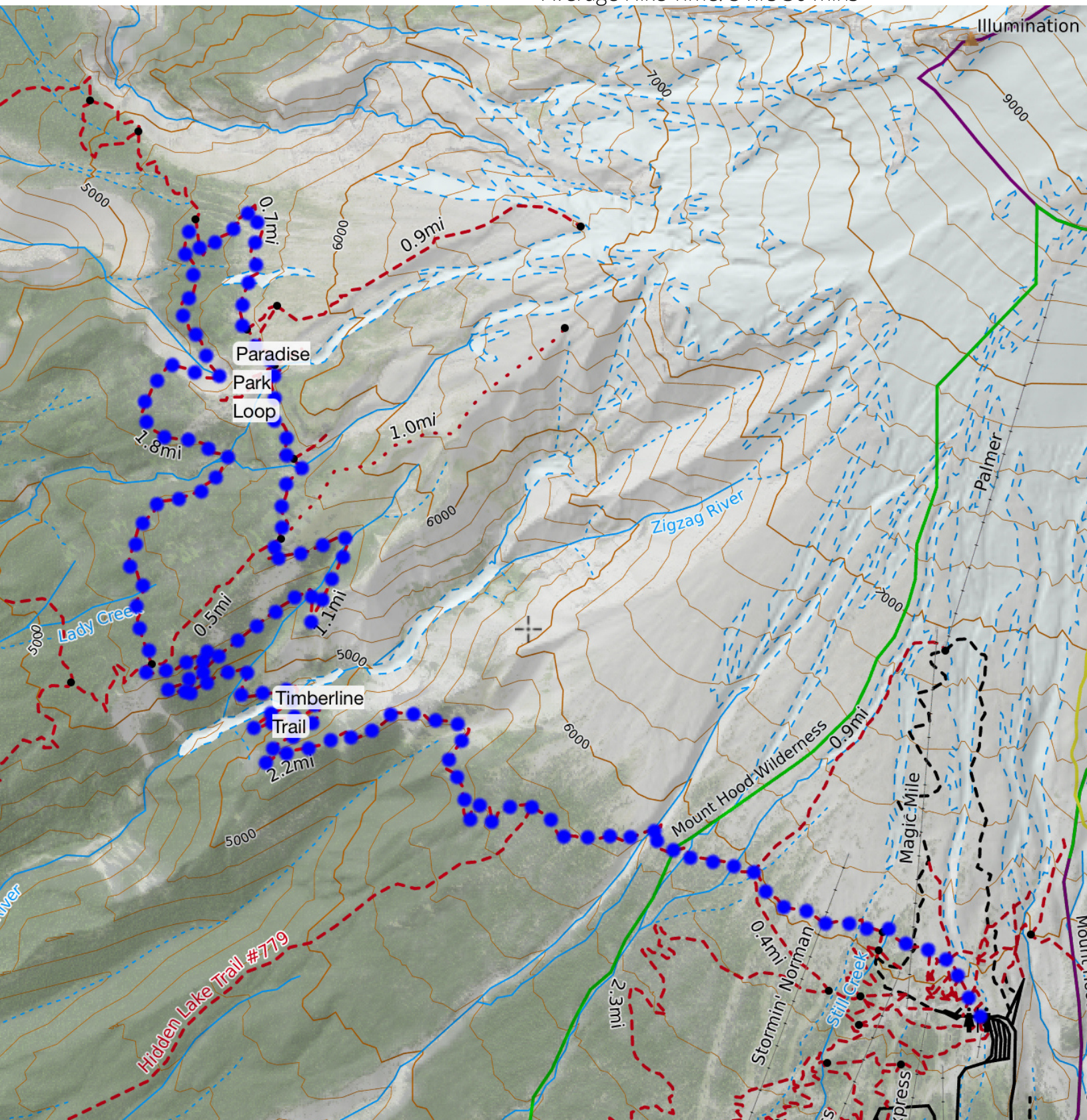
Length: 11.9 miles

Total Elevation Gain: 3067'

Average Hike Time: 5 hrs 30 mins+

Max Elevation: 6093'

Min Elevation: 4842'



Getting There

To get to the trail head - take highway 26 to Government and then take the left to Timberline Lodge. At Timberline Lodge there is generally plenty of parking. No permit is necessary in the summer, although a Sno-Park permit is required in the winter season. If you are planning to leave your car overnight there are some designated spots. Plenty of facilities at Timberline - if you get the chance check out the lodge itself.

The Hike

This is not a difficult hike. However you do have to descend into ZigZag canyon, cross the ZigZag River and ascend the other side. Crossing the ZigZag is rarely challenging. The trail is a mix of covered forest, sweeping canyon views and the beautiful Paradise Park meadows. Plenty of switchbacks to get the energy level up.

The trail takes you into the wilderness area and you have to fill out the permit at the permit box.

The Trail Head

The trail starts just before Timberline Lodge. Follow the signs to the Timberline Trail / Pacific Crest Trail. This will take you above Timberline Lodge on a service road and then follow the trail to the left.

The trail is dog friendly so bring your well behaved pup for an enjoyable hike.

Where to Camp

This hike is most often a day hike. It's also an awesome overnight backpack trip, ideal for beginners. There are good camping spots on many Paradise Loop trail itself. Those at the start are more wooded, while those towards the end are a little more exposed and on sandy bases. There are also camping opportunities on the Timberline trail, but these lack the openness and beauty of Paradise Park.

What's Noticeable

In early summer Paradise Park is a carpet of alpine bloom. Beautiful flowers cover the meadows and Mount Hood looks down from above. Iconic Timberline Lodge marks the start and end of this trail - if you have time - checkout the interior and maybe have a beer to relax at the end of your hike.



HikeIt Maps are (c) HikeIt 2021. Do not rely solely on this information for navigation. Make sure that you are prepared with the right equipment and know the weather conditions for your hike. Always practice LNT.

For more information: www.hikeit.com